

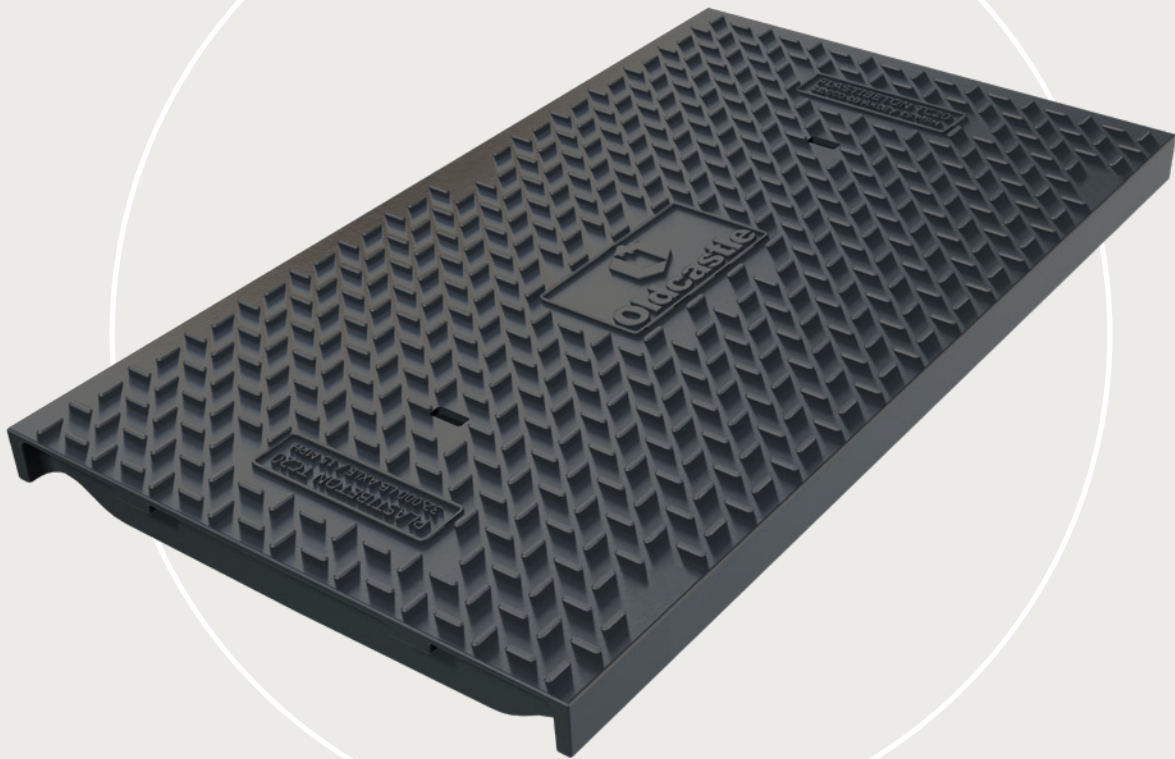
# Plastibeton®

## ULW Trench Covers

Improved Features

50% Weight Reduction

32,000 LB Axle Load



**High  
Performance  
Ultra Light**

 **Oldcastle Infrastructure™**  
A CRH COMPANY

Redefining lightweight—our Plastibeton® ULW trench covers provide a high-performance solution with a lower overall installation and maintenance cost while meeting the same load rating and environmental performance that made Plastibeton the industry leader in traffic rated cable trench. During installation or maintenance, these covers are easy to handle, allowing safer and quicker access to cables.

# The performance you need with greater availability.

## Lightweight, high-strength material

- A 50% reduction in weight when compared at our standard cover.
- Safer, faster, easier handling, for an overall lower cost of installation and maintenance.
- Traffic-rated performance; 32,000 lb axle load rating.

## Solid construction

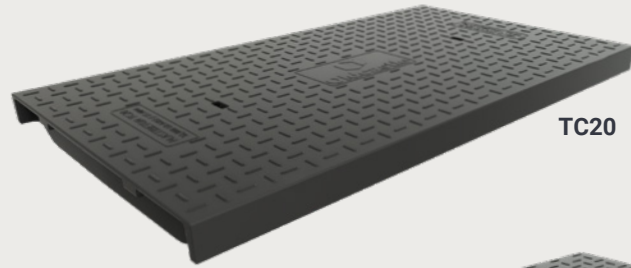
- Same, high-quality material through-and-through; no laminates or overlays.
- Covers can be cut to custom configurations without sacrificing load rating.

## Improved manufacturing

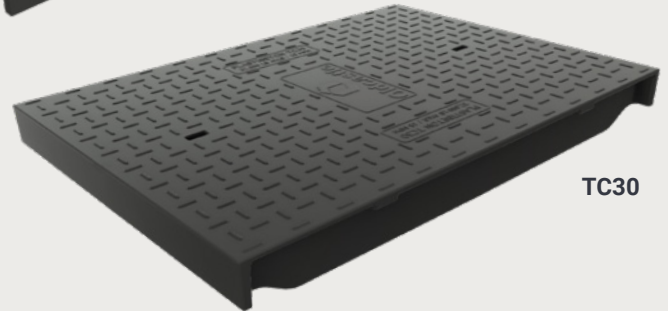
- Faster production and shorter lead times with greater product availability.
- Standard sizes available, additional models coming soon.

## Options and Customization

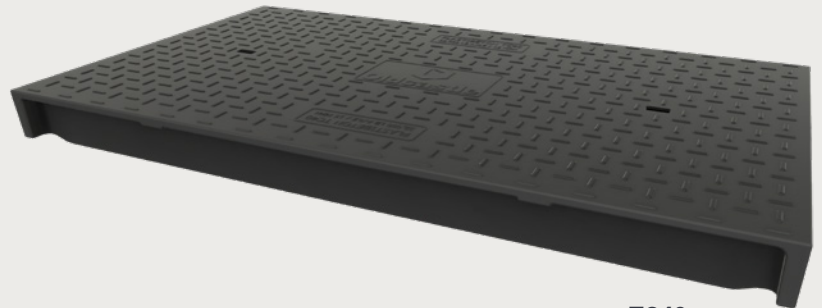
- Standard or interlocking models.
- Bolt-down and locking options.



TC20



TC30



TC40

Model	Width (In)	Length (In)	Thickness (In)	Weight (lb)	Covers per trench section
TC20	22 1/16	39 5/16	2	52.7	3
TC30	23 9/16	32 1/8	2 1/2	68.4	5
TC40	23 9/16	42 9/16	3	92.1	5
T6	Available soon				
T12	Available soon				

Dimensions may vary slightly.

4-A-032 Revision 3/2023

Trusted partnerships.  
Full scale solutions.



www.oldcastleinfrastructure.com | (888) 965-3227