

*Delivering Reliability*



## Services

***Strength You Can Count On***

*oldcastleprecast.com/services*  
**866-725-1795**

SERVICES

*Above And Below Ground Solutions*

Oldcastle Precast Services is well trained and knowledgeable in all aspects of critical infrastructure for global telecommunication, utility, data center, government, environmental and alternative energy markets. We customize our project involvement to meet your needs from the basic set/assemble or site preparation to a total design-build turnkey proposal.

Oldcastle Precast Services provides the broadest product line of above and below ground buildings, shelters, and vaults. We also offer innovative Cell Blocks Foundation System to provide you a total facilities construction package.



**Above Ground Precast Products**

Multiple Options – Various Applications

Oldcastle's above ground precast products are cost effective, aesthetically pleasing, vandal resistant, and easy to install. These products have various applications and can be custom designed and produced to meet your specific job specifications.



**Below Ground Precast Products**

Out of Sight and Watertight

Oldcastle Precast's low and zero profile enclosures provide a secure controlled environment that is visually appealing, cost effective and easily installed. These enclosures come in various sizes and can be designed and pre-wired to meet your specific job requirements. When space is a premium, Oldcastle's vaults and cabinets are the ideal solution.



TENANT IMPROVEMENTS

*Strength You Can Count On*

Oldcastle is your single source for system critical facilities. Not only do we manufacture multiple sizes and configurations of precast concrete shelters but we also modernize existing facilities to meet today's technology requirements.

- *Remodel / Renovate within the existing envelope*
- *Expand the existing envelope utilizing either conventional or precast construction*
- *Up-fit shell space to your specifications*
- *Upgrade power service and power quality*
- *Upgrade facility environmental systems*
- *Asset protection evaluation and upgrades*



Oldcastle Services is specialized and dedicated to this industry. On every project you get our knowledge and experience to help you through any portion of the overall process. We can start with your ideas / needs or already prepared plans. Our team is available to learn about your needs, walk your facility and provide you with a detailed plan of action and proposal.

FULL TURNKEY SERVICES

*Deploying an equipment facility is complex. Oldcastle Services makes it easy.*

Oldcastle Services has the experience, knowledge and resources to be your long term partner in the deployment, renovation and maintenance of your equipment facility. The overall deployment of your facility involves more than manufacturing a shelter. We provide pre-planning, coordinate the manufacturing of the shelter and handle all of the field details to ensure your on-time completion. Involving Oldcastle Services provides you these benefits:

- Value added
- Single point of accountability
- Streamlined and expedited deployment

We customize a deployment program that meets your quality, schedule and value needs, through an understanding of your:

- Geographical requirements
- Technical specifications
- Equipment requirements



Outlined below are the principle tasks you must account for in the overall budget and schedule. We have the expertise and ability to efficiently perform each of these tasks and welcome the opportunity to work with your team.

**Program Management**

- Oversight and communication
- Value engineered
- Procurement

**Real Estate**

- Site selection
- Due diligence and evaluation
- Negotiate and close property

**Design, Engineering and Permitting**

- Space planning
- Zoning and permitting
- Civil, structural, architectural, mechanical and electrical

**Site Development**

- Site work and foundations
- Utilities
- Towers and dishes

**Building Construction**

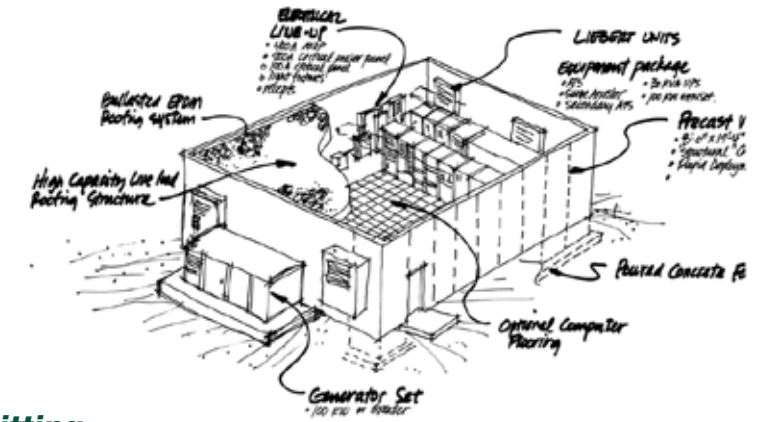
- Final outfitting and assembly
- Architectural enhancements
- Renovations and upgrades

**Equipment Integration**

- Racks and cable ladder
- Offsite and factory equipment installation
- Wiring and testing

**Continuing Services**

- Site audits and inspections
- Preventive maintenance
- Repairs



SHELTERS

*Precast Concrete Shelters Up to 600sf*

The answer to your most difficult equipment enclosure requirements for wireless, cable and telephone service providers. Made from steel reinforced precast concrete, these enclosures are designed to provide secure housing for your equipment whatever the seismic requirements, floor, roof or wind load. With short lead times and rapid installation on a foundation, our shelters are the economical solution to your national deployment enclosure needs. We utilize both monolithic and panel construction methods, designed for both single and double wide applications. Some configurations include multi-room, stackable and partially buried units.

Our shelters are available in a variety of dimensions to fit many co-location options such as private keying, individual cages and security features. They can be factory equipped for immediate use after a quick installation and hook up.



**Custom Shelters**

Oldcastle Precast understands that some projects may require unique construction or size specifications. Our design and engineering team can work with you to create strong solutions that meet the demands of your specialized project.

**Benefits and Design Features**

- Sizes available up to 600 sf
- Multiple exterior and roof designs available
- Rapid national deployment
- Maintenance-free finish



**Applications**

- Wireless Equipment
- Cable Equipment
- Telephone Equipment
- Pump Houses
- Generator Buildings
- Control Rooms
- Guard Houses
- Storage



MAXI-MOD MODULAR SHELTERS

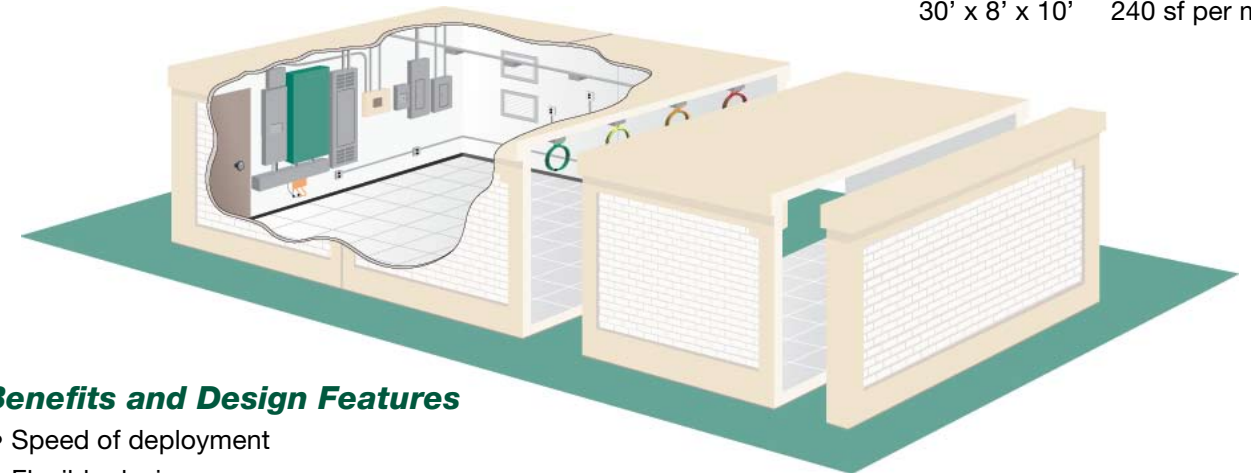
*Monolithic Precast Concrete rings for Rapid Deployment - 700 sf and Up*



This modular all precast building allows for the ultimate in flexibility for your large square foot shelter needs. Available in 20 and 30-foot widths and various lengths, Maxi-Mods provide you with a customizable fast-track building from 700 sf and up. The manufacturing process of the Maxi-Mod allows for a quick turn around. While you're getting a site permit and a foundation is being prepared, we're building the Maxi-Mod in our plant. Your new custom Maxi-Mod can be installed on your site in one day and ready for integration within a week.

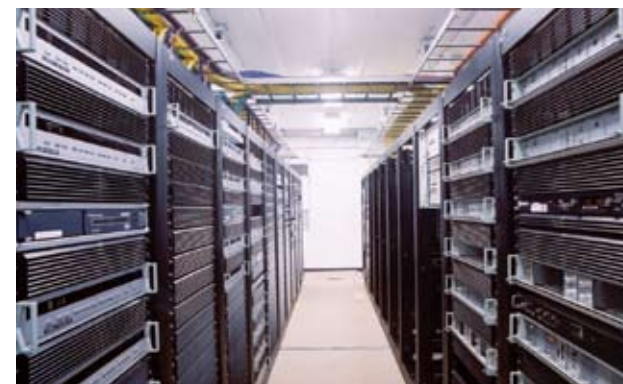
**Maxi-Mod Models - 2 module sizes available**

- Interior Dimensions:**
- 20' x 7' x 9'     140 sf per module
  - 30' x 8' x 10'    240 sf per module



**Benefits and Design Features**

- Speed of deployment
- Flexible design
- Expandable



CELL BLOCK™

*Precast Modular Foundation System*

Oldcastle Cell Blocks are a precast, post-tensioned foundation system designed specifically for the wireless communications industry. Cell Blocks accommodate monopoles, shelters, equipment cabinets, power/telco pedestals, precast walls, chain link fencing and stairs.

Cell Blocks provide expanded site acquisition options. Cell Blocks were originally designed as a cost effective replacement for site-built foundations, but because they are deployed at grade level, Cell Blocks can also be used at contaminated and environmentally or archeologically sensitive sites. Because they can be deployed using heavy equipment, Cell Blocks are ideal for remote sites with limited access for concrete trucks and drilling rigs.

Cell Blocks facilitate aggressive construction schedule reductions of at least 75%. Typically the foundation, shelter and monopole are deployed in a single day.



The precast concrete Blocks have interlocking keys cast into their vertical faces. Conduits are cast into the Blocks allowing post-tensioning bars to be inserted horizontally in both directions and anchor bolts for the pole are also cast into the Blocks.

Wall panels and steps that attach to the perimeter Blocks can be supplied allowing the bulk of the civil construction to be completed in ONE day.

Cell Blocks are currently available in 7' x 7' x 2'. The Blocks can be configured in many ways to meet customer requirements. Cell Blocks pads are also available for outdoor equipment, diesel generators, and equipment shelters.

Cell Block foundations are currently being used by Sprint/Nextel, Verizon, T-mobile, AT&T/Cingular, ALLTEL, Cricket, the U.S. Military, and others.

Additional blocks can be added to the Cell Blocks foundation increasing load capacity and footprint without compromising the integrity of the existing foundation.



**Advantages**

- Cell Blocks can be installed complete with pole and equipment or shelter, including fencing and steps in ONE day.
- Cell Blocks can be a non-penetrating foundation system allowing the Blocks to be used on contaminated sites increasing customers' leasing options.
- Cell Blocks can be installed in areas where rock, difficult access or other constraints would prevent the use of a conventional foundation.
- Cell Blocks offer predictability in both cost and installation time.
- Cell Blocks can be removed and reinstalled.



**Configurations**

- Outdoor equipment only
- Pole and outdoor equipment
- Pole and shelter
- Shelter only
- Pole only
- Generator only

Many additional configurations are possible.



**Applications**

- Shelters
- Monopoles
- Equipment Cabinets
- Power/Telco Pedestals
- Precast Walls
- Fencing

**Enclosure Options**

- Exterior Finishes
- Roofing Variations
- Electrical Pre-wiring
- Full Turnkey Services

**Foundation Options**

- Precast Concrete Screen Walls
- Chain Link Fencing Brackets
- Gates and Doors
- Stairs

CONTROLLED ENVIRONMENT VAULTS (CEV)

*Secure Underground Structures*

For underground applications in the 60 - 400 square foot range, choose an Oldcastle Precast Controlled Environment Vault. Available flush to grade, with standard entrance way, or with the entrance way hidden by our innovative camouflaged boulder, Oldcastle Precast CEV's offer unmatched security for your network requirements, while allowing you to please government and site owners with an out of the way camouflaged enclosure.

**CEV Installation Sequence:**

1 - Excavation is prepared ahead of time.



3 - Once the top section has been placed, the unit is ready to be backfilled.



2 - After the base section has been placed, the equipment platform is lowered in.



4 - After backfill and startup, the CEV is ready for immediate use.



CONTROLLED ENVIRONMENTAL CABINETS (CEC)

*Strong and secure enclosures when space is an issue*

Oldcastle Precast's Controlled Environment Cabinets are ideal for your smaller equipment enclosure needs where space is an issue. Strong and secure, Oldcastle Precast's Controlled Environment Cabinets are partially buried to maintain a low profile while still providing full headroom for your technicians. The ultimate is rapid deployment; an Oldcastle Precast CEC can be placed on your site.

**CEC Installation Sequence:**

1 - The shallow excavation is usually prepared with a stone bottom.



3 - CEC is lowered into position in one piece.



2 - CEC arrives at the job site with all necessary lifting apparatus, ready for placement.



4 - After backfilling and grading, CEC is ready for immediate use.



[oldcastleprecast.com/services](http://oldcastleprecast.com/services)



### *Oldcastle Precast*

Oldcastle Precast is the leading manufacturer of precast concrete, polymer concrete, and plastic products in the United States. With a nationwide network of facilities, our products are always close at hand. Our employees are committed to upholding core values of reliability, quality, and service in revolutionary ways. Our attention to detail exceeds the expectations of customers from some of the largest companies in the U.S., across a spectrum of industries.

**Services**  
**866-725-1795**

[oldcastleprecast.com/services](http://oldcastleprecast.com/services)